



South Yorkshire Health and Wellbeing Assets Study

A Report for the South Yorkshire
Mayoral Combined Authority

KADATM
RESEARCH



SOUTH YORKSHIRE
SYMCA
MAYORAL
COMBINED
AUTHORITY



Kada Research was commissioned by the South Yorkshire Mayoral Combined Authority (SYMCA) to map the health and wellbeing sector, identify opportunities to develop existing assets, grow others, and build and harness collaborations between assets.

Quantitative and Qualitative methods were used to investigate the health and wellbeing assets of South Yorkshire, with over 40 stakeholders consulted.

South Yorkshire (SY) Health and Wellbeing Sector in Numbers



£3.3 billion GVA*

12% of total SY GVA.
(National share 8.6%).

* Gross Value Added



£1 in every £8

SY GVA generated
in Health and Wellbeing.



89,895 Employees

7th highest share of employment
of all 38 English LEP's.*

* Local Enterprise Partnership



1 in 6 people

in SY employed in Health and Wellbeing.



1,815 Businesses (2021)

in SY in Health and Wellbeing sectors.



Concentration of Medical Instrument and Supply Manufacturers

Looking at the share of all
business SY ranks the highest
against the 38 English LEPs.



5 SY Health and Wellbeing Strengths

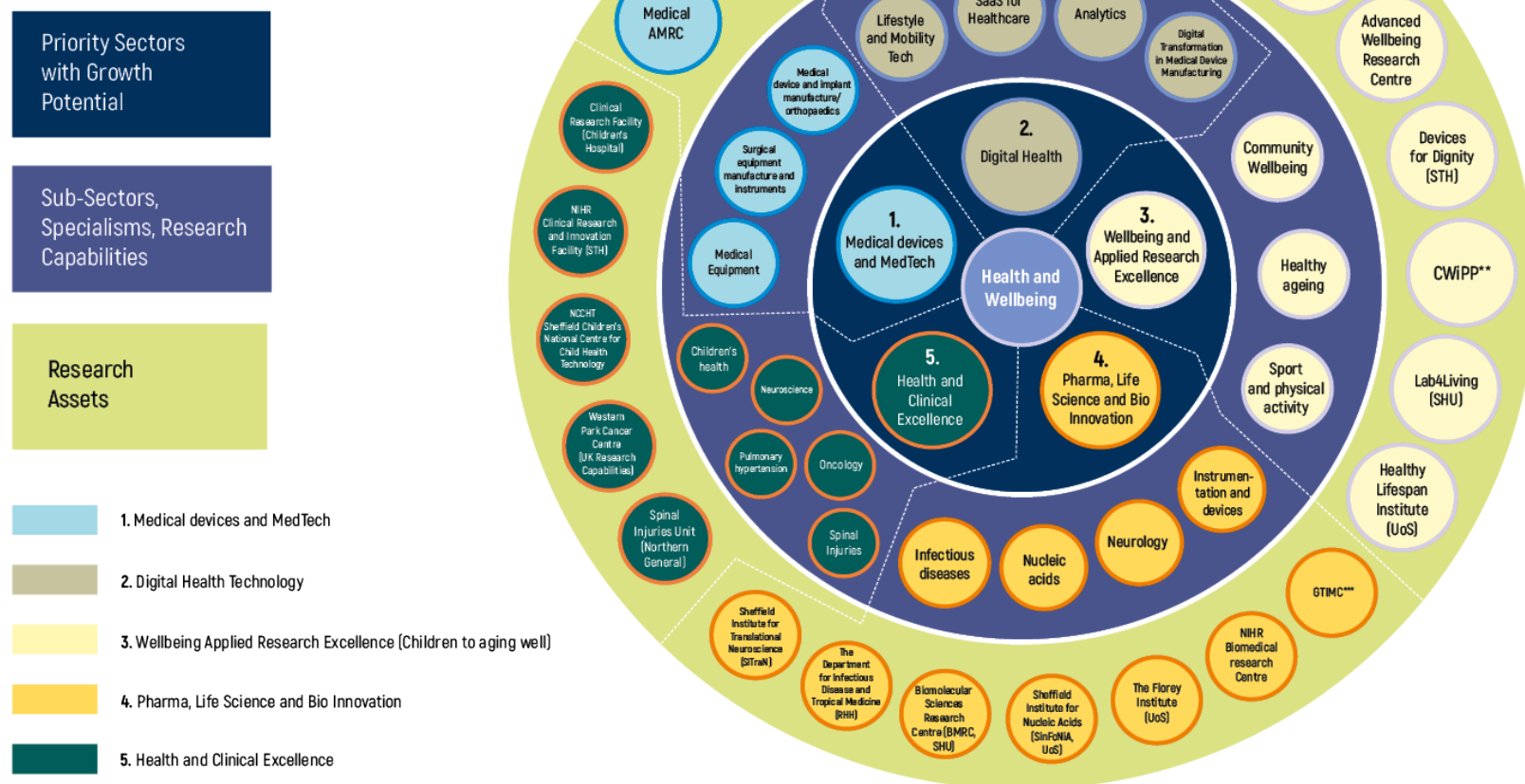
1. Medical Devices & Medtech.
2. Digital Health.
3. Wellbeing & Applied Wellbeing Research Excellence.
4. Life Science & Bio Innovation.
5. Health & Clinical Excellence.



4 Take Aways

1. Home to the Advanced Manufacturing Innovation District which is able to combine research, innovation and technology for collaboration/commercialisation.
2. International reputation for medical device manufacturing/production. Cluster of orthopaedic and orthotic firms.
3. Breadth of health and wellbeing companies from medical devices to digital health and life science.
4. A cluster of globally recognised research assets including Medical Advanced Manufacturing Research Centre and Advanced Wellbeing Research Centre.

South Yorkshire Health and Wellbeing Sector: Priorities, Strengths and Capabilities



*Centre for Assistive Technology & Connected Health Care; **Centre for Wellbeing in Public Policy; *** Gene Therapy Innovation and Manufacturing Centre; Note: SHU = Sheffield Hallam University, UoS = University of Sheffield, NIHR = National Institute for Health Research, STH = Sheffield Teaching Hospital, RHH = Royal Hallamshire Hospital, RDaSH = Rotherham Doncaster and South Humber NHS Foundation Trust

South Yorkshire Health and Wellbeing Assets Study

Research Centres

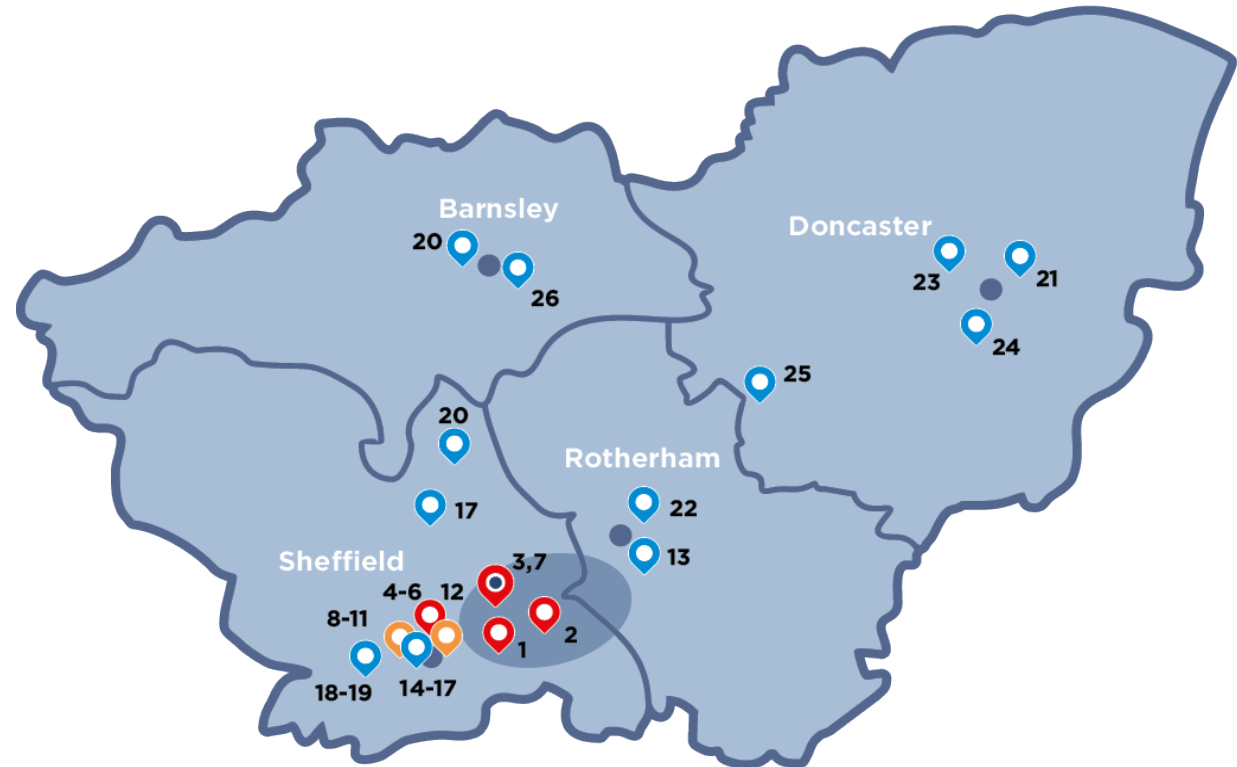
- 1) Advanced Wellbeing Research Centre- Darnall
- 2) Advanced manufacturing research centre (AMRC) and Medical AMRC
- 3) National Centre for Sport and Exercise Medicine- Olympic Legacy Park (OLP)
- 4) Sheffield Biomedical Research Centre- Royal Hallamshire Hospital
- 5) University of Sheffield:
 - Healthy Lifespan institute
 - School of Clinical Dentistry
 - The Florey Institute
 - Neuroscience Institute
 - Medical Humanities Sheffield
 - Insigneo Institute
 - Sheffield Institute for Nucleic Acids
 - Centre for Assistive Technology and Connected Healthcare
 - The Centre for Wellbeing in Public Policy
 - Gene Therapy Innovation and Manufacturing Centre (under construction)
- 6) Sheffield Hallam University:
 - Sport and Physical Activity Research Centre
 - Centre for Behavioural Science and Applied Psychology
 - Lab4Living
 - Biomolecular Science Research Centre
- 7) National Centre for Child Health Technology- Olympic Legacy Park (OLP), (under construction)

Networks & Co-operatives

- 8) NIHR Devices for Dignity MedTech Coop- Royal Hallamshire Hospital
- 9) Healthcare Gateway- Faculty of Medicine, Dentistry and Health
- 10) Medilink- Sheffield
- 11) NIHR Children and Young People MedTech Cooperative - Sheffield
- 12) Y&H AHSN- Sheffield

Hospitals (NHS/Private)

- 13) Rotherham General Hospital
- 14) Western Park Cancer Centre
- 15) Northern General Hospital
- 16) Royal Hallamshire Hospital
- 17) Sheffield Children's Hospital
- 18) BMI Thornbury
- 19) Claremont Hospital
- 20) Barnsley Hospital
- 21) Doncaster Hospital
- 22) Kinvara Hospital
- 23) Cheswold Park Hospital
- 24) Tickhill Road Hospital
- 25) Montagu Hospital
- 26) Kendray Hospital



Advanced Manufacturing Innovation District (AMID) and Olympic Legacy Park (OLP)

Turnover figures

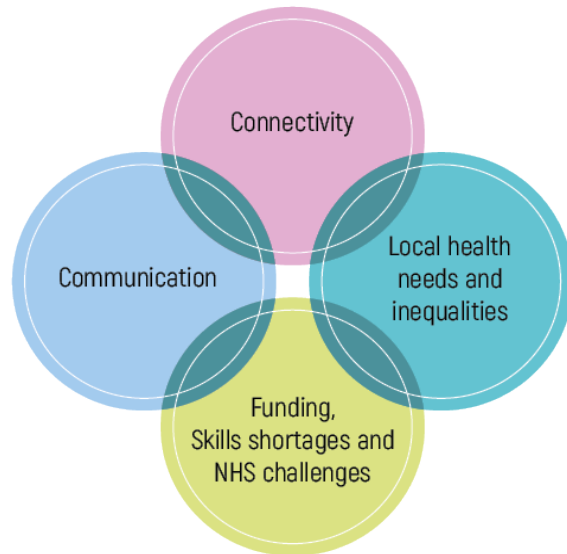
Highest Turnovers- Excluding Hospitals (Minimum 10m+)			
Name	Band	Town	Description
B Braun Medical	£100m to £249,999,999	Sheffield	Medical Equipment Leasing and Rental
Arthrex Ltd	£25m to £49,999,999	Sheffield	Orthopaedic Equipment
Orchid Sheffield	£25m to £49,999,999	Sheffield	Orthopaedic Equipment
Tecomet Symmetry Medical Sheffield	£25m to £49,999,999	Sheffield	Surgical Equipment Manufacture
Barber of Sheffield Ltd	£10m to £24,999,999	Barnsley	Medical Equipment Leasing and Rental
Chas a Blatchfords	£10m to £24,999,999	Sheffield	Surgical Equipment Manufacture
J R I Orthopaedics	£10m to £24,999,999	Sheffield	Orthopaedic Equipment
Harvest Healthcare	£10m to £24,999,999	Rotherham	Hospital Equipment
Swann-Morton	£10m to £24,999,999	Sheffield	Instruments for Medical Purposes Manufacturers
Sun Healthcare Ltd	£10m to £24,999,999	Barnsley	Home Care Service Providers
Cygnet Health Care	£10m to £24,999,999	Sheffield	Mental Health Centres
St Luke's Hospice	£10m to £24,999,999	Sheffield	Hospices
A L S Pharmaceutical	£10m to £24,999,999	Rotherham	Research and Laboratory Based Activities
Preventx Ltd	£10m to £24,999,999	Sheffield	Medical Laboratories

Source: Databubble 2022

Sub-Sector Priorities, Strengths & Research & Innovation Capabilities

1. Medical Devices and Medtech
2. Digital Health
3. Wellbeing and Applied Wellbeing Research Excellence
4. Life Science and Bio Innovation
5. Health and Clinical Excellence

Current challenges for South Yorkshire's health and wellbeing sector



Future challenges and opportunities for South Yorkshire's health and wellbeing sector

