

South Yorkshire Local Resilience Forum

Annual Report April 2024 to March 2025



Foreword

In 2024/25 South Yorkshire Local Resilience Forum (or “LRF”) has responded to significant challenges, from disorder to sieges. In an ever-changing risk landscape, our multiagency work has never been more vital.

This report highlights our achievements, partnerships, and our shared commitment to building resilience across South Yorkshire.

South Yorkshire LRF Co-Chairs

In this Report

Page 1:

- Foreword
- Who We Are
- Our Priorities

Page 2:

- Our Year at a Glance

Page 3:

- Collaboration & Partnerships
- Community Engagement & Resilience

Page 4:

- Looking Ahead
- Contacts

Who We Are

South Yorkshire LRF is a multiagency partnership which brings together emergency services, Local Authorities, health bodies, the Environment Agency, utility and transport providers, the voluntary sector, and a range of other local organisations to plan for and respond to emergencies in South Yorkshire.

We are constituted through the [Civil Contingencies Act 2004](#) and national guidance on [the role of LRFs](#) provides further insights.

Our Priorities

- Assess local risks
- Prepare for emergencies
- Coordinate multiagency training and exercises
- Encourage community resilience
- Respond to emergencies



Our Year at a Glance

3

Incident Responses coordinated through the LRF structure.

An explosive device was found at a property in Grimethorpe in May 2024 resulting in an evacuation, a siege took place on Broad Street in Sheffield in January 2025 also resulting in a large scale evacuation, and Summer 2024 saw violent disorder erupt focused on the Holiday Inn Express in Rotherham.

Outside of the LRF structure, partners continued to respond together at an operational level to a wide range of incidents including property fires and wildfires, storms, snow, road traffic collisions, and explosive devices.

Our interoperability is underpinned by the national [JESIP Principles](#).

8

Multiagency exercises held to test our response to incident scenarios.

Topics included heatwave, crowd-related incidents, and site-specific risks such as hospital evacuation.

21

Multiagency training courses / workshops delivered.

Topics included interoperability between responders at all levels of command, debriefing from incidents, railway incidents, and terrorism. An online LRF induction course was also developed.



Community Risk Register fully updated across all risks.

Local risks to South Yorkshire are highlighted in our Community Risk Register available on our website.

Risks include natural hazards such as severe weather and flooding, accidents and system failures such as utility outages or transport accidents, and malicious threats such as terrorism or cyber-attacks.



Scenario Planning undertaken across multiagencies for a range of risk scenarios.

Scenarios explored and plans refreshed this year included reservoir inundation, pandemics, utility outages, hazardous materials, crowd-related incidents, and terrorist incidents.

Collaboration & Partnership

A few highlights:

- Multiagency partners were represented in our LRF planning meetings throughout the year at each of the three levels of command – operational, tactical, and strategic.
- South Yorkshire LRF is led by 4 Co-Chairs who are elected from within the partnership for a period of 3 years and supported by an LRF Secretariat.
- In Exercise Grey Parrott in May 2024, 42 delegates from 19 different organisations explored the multiagency tactical options that would be considered whilst preparing for and managing a prolonged heatwave.
- In an exercise for communications leads, 31 delegates from 18 different organisations tested plans for warning and informing the public during a terrorism incident.
- In an exercise for blue light responders, the Control Room and tactical command of a crowd-related major incident was tested.

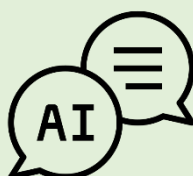
Community Engagement & Resilience



**Voluntary Sector
Activation Framework**
developed and tested to
request volunteer support
during incident
responses.



**Terrorism exercising
tool** developed to help
businesses to test their
plans against terrorism
scenarios – [ACT in a
Box](#).



**Artificial Intelligence
Chatbot** developed to
support communities to
[improve their resilience to
emergencies](#)



**National resilience
campaigns** promoted
including
WeatherReady, Restart
a Heart, and Flood
Action Week.

Looking Ahead

In the forthcoming 2025/26 year we are anticipating publication of the government's new National Resilience Strategy which will set the future resilience direction for the UK.

This, coupled with our South Yorkshire partner strategic assurance process and multiagency training needs analysis, will support us to refresh our LRF priorities for the next 3 years.

We will continue to plan for the range of risks on the National Risk Register, focusing on the risks most likely to impact South Yorkshire such as weather related risks, cyber risks, and crowd-related risks. As our climate and the international geopolitical landscape changes, we will also be considering the impact of these longer term national level chronic risks on our local risk picture.

For more information on local risks and how you can prepare, you can access our Community Risk Register on our [South Yorkshire LRF webpage](#).

For general advice on preparing for emergencies, the national [Prepare webpage](#) has a range of useful information for individuals, for homes, for businesses, and for communities.



Contacts

Email:	LRFAdmin@southyorkshire.police.uk
Website:	https://southyorkshire-ca.gov.uk/explore_south-yorkshire-local-resilience-forum
Address:	South Yorkshire Local Resilience Forum, c/o South Yorkshire Police Operations Complex, Europa Link, Sheffield, S9 1XX
Media Enquiries:	media@southyorks.pnn.police.uk