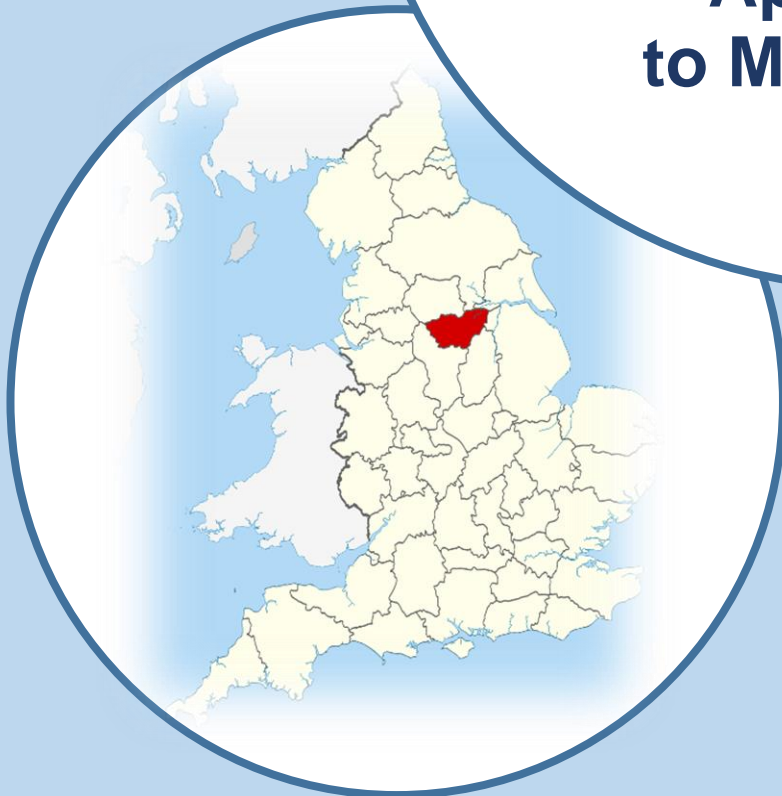




South Yorkshire
Local Resilience Forum

ANNUAL REPORT

**April 2023
to March 2024**



Who are we?

South Yorkshire Local Resilience Forum (LRF) is a multiagency partnership comprised of representatives from all the local organisations needed to plan and prepare for local incidents and emergencies.

We work together to identify potential local risks and produce multiagency emergency response plans to respond to risks which could lead to incidents in South Yorkshire.

The main agencies who respond to local major incidents or emergencies are known as **Category 1 Responders**, as defined by the [Civil Contingencies Act 2004](#) (CCA). In South Yorkshire, these include:

- Our emergency services: [South Yorkshire Police](#), [South Yorkshire Fire and Rescue](#), [Yorkshire Ambulance Service](#), and [British Transport Police](#)
- Our four Local Authorities: [Barnsley Metropolitan Borough Council](#), [City of Doncaster Council](#), [Rotherham Metropolitan Borough Council](#) and [Sheffield City Council](#)
- Our local NHS organisations: local [NHS Trusts](#), the [NHS South Yorkshire Integrated Care Board](#), and [NHS England](#)
- The [Environment Agency](#)
- The [UK Health Security Agency](#)

LRFs are supported by organisations known as **Category 2 Responders**, who have a responsibility to cooperate with Category 1 Responders and to share relevant information with the LRF. In South Yorkshire these include:

- Transport infrastructure organisations such as [National Highways](#) and [Network Rail](#)
- Utility infrastructure operators such as [Northern Powergrid](#) for electricity, [Yorkshire Water](#) and [Severn Trent Water](#) for water, and [Cadent](#) and [Northern Gas Networks](#) for gas
- The [Met Office](#)
- The [Coal Authority](#)

We also work with other partners such as **South Yorkshire Mayoral Combined Authority** (who lead on transport integration, economic regeneration, and also host the South Yorkshire LRF webpage), and partners in the **military** and **voluntary sectors** who provide a valuable contribution to LRF work in emergency preparedness.

In this report:

Page 2: Who are we?

Page 3: Our aim and objectives

Page 4: Vulnerable people support

Page 5: Societal resilience to emergencies

Page 6: Electricity resilience

Page 7: Cyber resilience

Page 8: Multiagency training and exercising

Page 9: Adaptive learning

Page 10: Planning for emergencies

Page 11: Industrial action and protests

Page 12: Storm Babet

Page 13: Storm season 2023/24

Page 14: Major fires

Page 15: Extremes of temperature

Page 16: Our more “unusual” incidents

Page 17: Preparing for emergencies

Page 18: Our team

Our aim and objectives



OUR AIM: A multiagency partnership that delivers the duties within the Civil Contingencies Act and enables South Yorkshire partners and communities to be better prepared to respond to and recover from emergencies.

OUR OBJECTIVES:



1. Prepare multiagency **risk assessments** to identify risks which may impact South Yorkshire communities.
2. Produce multiagency **emergency response plans and capabilities** that aim to prevent or minimise the impact of emergencies on local communities.
3. Foster a programme of multiagency **training and exercising** to test multiagency emergency response plans and capabilities.
4. Warn and inform **communities and businesses** about local risks and encourage their preparedness for and resilience to these risks.
5. Coordinate multiagency **emergency preparedness and response structures** which encourage collaborative and cooperative partnership working, shared understanding and situational awareness, and continuous learning.

Our priority areas for multiagency preparedness activity 2022-2025 are:



Vulnerable people identification, data sharing, and humanitarian support



Helping communities to become more resilient to emergencies



National Electricity Transmission System Failure



Cyber impacts



Multiagency training and exercising



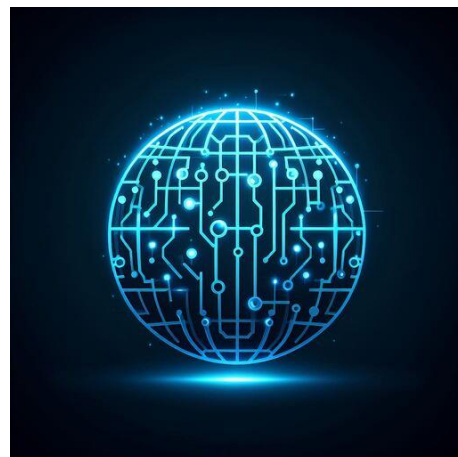
Adaptive learning from incidents, training and exercises



Vulnerable people identification, data sharing, and humanitarian support

RISK AND VULNERABLE PERSON DATA PROJECT:

- We started an exciting partnership project in December 2023 to deliver a risk and vulnerability visualisation tool for South Yorkshire. This will be a 2-year project through to late 2025.
- The project is being delivered jointly between the South Yorkshire Mayoral Combined Authority (SYMCA) and the NHS South Yorkshire Integrated Care Board (ICB), with participation in the project by a range of local LRF partners.
- The first workstream aims to address a need to develop a secure, multiagency accessible system to visualise resilience risks before, during and after emergency events, particularly flood risk events. This will build on work already underway within the Connected by Water multiagency alliance, which has been piloted within City of Doncaster Council (CDC).
- The second workstream aims to develop a minimum standard which will enable the assembly of consistent and defined vulnerable persons data across South Yorkshire when required to save life during the response to a multiagency emergency. This will bring together information from multiple providers in a technical solution to deliver data to those responders who need to provide targeted support to the most vulnerable during a major incident response.



VOLUNTARY COMMUNITY AND FAITH SECTOR

ENGAGEMENT: We have a strong Voluntary Community and Faith Sector in South Yorkshire, who are very supportive of the LRF and come together quarterly in an LRF Voluntary Community and Faith (VCF) Group. In March 2024, the group organised our first ever exercise to explore how responders and the VCF Sector could potentially respond together to support those affected by a major fire in a high rise residential building. The recommendations which emerged from the exercise debrief will hopefully help the LRF to be a better partner to the Sector, and the resulting work will fill the LRF Voluntary Community and Faith Group work programme for years.



HUMANITARIAN SUPPORT: In September 2023, LRF partners came together to test the LRF Humanitarian Assistance Protocol in an exercise which explored potential humanitarian assistance requirements during recovery from a terrorist attack. We were joined by a nationally renowned humanitarian assistance expert to help us to test our plans, and we have further refined our plans following the exercise.



Helping communities to become more resilient to emergencies

In April 2023 our LRF Strategic Meeting approved a brand-new LRF Societal Resilience Strategy. The strategy had been a year in the making and was the result of considerable consultation.

We know that many people in society are already quite resilient and can prepare for local disruptions and emergencies, and can help themselves if one occurs.

However some parts of our society are less resilient, are likely to suffer more from the impacts, and may have diverse needs that they cannot resolve themselves. These are the groups who may require extra help from partners within our Local Resilience Forum during local disruptions and emergencies.

Some disruptions and emergencies (such as a national power outage) are so large that the volume of need can outstrip what LRF partners can realistically support. Here, wider society could potentially play a role in bolstering the statutory sector response so that emergency responders can focus on those most in need. We saw this societal response demonstrated most admirably during the 2019 floods in the village of Fishlake in South Yorkshire.

Our vision for societal resilience is to build on existing local resilience capabilities in South Yorkshire to help enhance the statutory sector response to disruptions / emergencies, and to support individuals, community groups, businesses, organisations, and the voluntary sector to play a meaningful part in building the resilience of our society.

Our project objectives are to:

SUPPORT	ACTIVATE	REDUCE
Support South Yorkshire residents to improve their own resilience.	Activate those in society who can help themselves or help others.	Reduce risk and vulnerability of those most in need.

Our first strategy initiative focusses on the activation of voluntary sector support. We have a vibrant and responsive Voluntary Community and Faith Sector in South Yorkshire and we are exploring with the sector, through our LRF Voluntary Community and Faith Group, what we can do as an LRF to further activate and embrace the skills and capacity of the sector during a local emergency.

From late 2025, we hope to move to the second of our strategy initiatives and start to engage local communities in exploring the concept of Resilience Hubs, both to empower their own community resilience planning, and for use as a local Community Hub for information and assistance during an emergency. Co-production with local communities will identify locations; in the initial stages these are likely to be based around Parish Councils, or existing community building locations.



National Electricity Transmission System Failure



The National Electricity Transmission System (NETS) transports electricity across Great Britain. A failure of this system has the potential to severely disrupt all other critical systems. Everyone without a backup generator would lose their mains electricity supply instantaneously and without warning. A nationwide loss of power would result in secondary impacts across critical utilities networks (including mobile and internet telecommunications, water, sewage, fuel and gas). This would cause significant and widespread disruption to public services provisions, businesses, and households, as well as loss of life. Reasons for failure could include an extreme weather event, a cyber attack and cascading technical failures.

Due to the rating of this risk on the National Risk Register, our LRF undertook a multiagency exercise at the end of 2022/23 to explore the local impacts of a failure of the National Electricity Transmission system.

Throughout 2023/24 we have been working on a range of workstreams which have emerged from this exercise. Multiagency partners have worked together to explore key resilience topics including:

- Water resilience
- Fuel resilience
- Telecoms resilience
- Multiagency coordination during a power outage

As a result of the fuel workshop, our LRF Business Continuity Group plan to make fuel resilience one of their main 2024/25 work programme themes.

A follow-up Electricity Resilience Workshop was held in March 2024 to provide insights into the operational response to a more localised major incident affecting the electricity network and the welfare options available for affected customers.



Further information:

- Find your electricity network operator by visiting the [Powercut 105](https://www.powercut105.co.uk) website or calling free on 105. Visit [Northern Powergrid](https://www.northernpowergrid.co.uk) for information on power cuts.



Cyber impacts

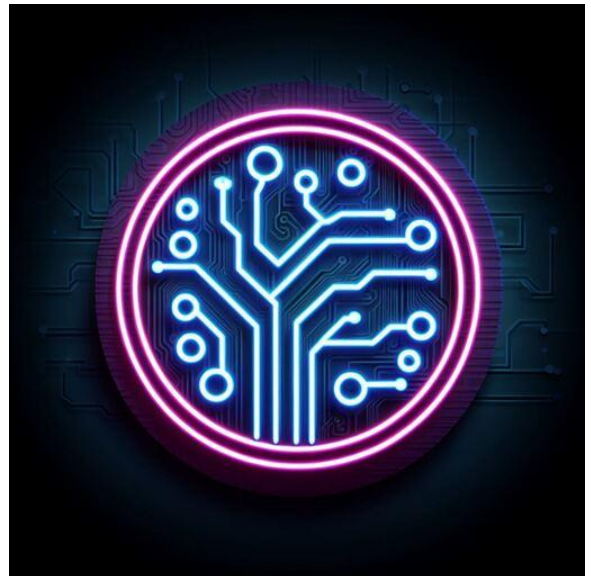
In the last year we have been following through on the recommendations from our cyber exercise in February 2023.

The first recommendation from the exercise focused on the need for consistency in cyber incident risk impact assessments. As a result, we have produced a Software Specification for a new Yorkshire and Humber Cyber tool. The tool will support all LRF partner organisations to assess the impact of a cyber incident in a consistent way, and linked to national risk categorisations. The tool also aims to indicate where multiagency engagement through an LRF may be of benefit. This project will continue into 2024/25.

The second recommendation from our exercise focused on the need to create a space to plan and prepare regionally for cyber incidents. Our LRF has therefore joined a regional Cyber Group to promote cyber resilience across our region.

South Yorkshire LRF's Coordinator was also a guest speaker at the Northern Cyber Warning Advice and Reporting Point (WARP) Conference in July 2023.

Our LRF Business Continuity Group has a standing cyber resilience agenda item so that multiagency partners can explore common cyber threats and share approaches to cyber resilience.



Further information:

- Visit the [National Cyber Security Centre](#) website for more information on staying safe online – there is guidance for individuals and all sizes of businesses.



Multiagency training and exercising

TRAINING AND EXERCISE GROUP: LRF multiagency training and exercising is led by our LRF Training and Exercise Group. The group's role is to identify, prioritise, coordinate, and ensure delivery of training and exercising to meet multiagency partner requirements.

Training and exercise topics or themes are generally linked to the higher risks on our South Yorkshire Community Risk Register.

In 2023/24 the group commissioned a significant multiagency training and exercise programme.

TRAINING: Multiagency LRF training has included:

- LRF induction courses for new starters to explain the role of the LRF and how partners work together
- The Joint Emergency Services Interoperability Principles (JESIP)
- A Multi Agency Gold Incident Command course.

EXERCISES: Multiagency LRF exercises have been developed for a range of local leads who may respond to a multiagency incident. This could be at the operational, tactical, or strategic level of command, or in a specialist area such as warning and informing the public. Exercise themes have included:

- Flooding
- Heatwave
- Incident asset response coordination
- Coordination of the local death management system
- Response to terrorism
- Recovery from terrorism
- Power outage

We also exercise regularly at high risk sites in South Yorkshire which fall under the national [COMAH Regulations](#).

NEXT YEAR: Our LRF training and exercising priorities for 2024/25 are:

- Developing an in-house Tactical Coordinating Group (TCG) training programme
- Multi Agency Gold Incident Command training for strategic leaders
- Workshops for Emergency Planners on key emergency planning topics
- A strategic exercise
- A tactical exercise
- A communications exercise
- COMAH exercises
- Regional training and exercise opportunities



Adaptive learning from incidents, training and exercises

THEMATIC REVIEWS: Each year, our LRF schedules thematic discussions at our LRF Strategic Meeting, which sits at the top of our LRF governance structure and is attended by the most senior leaders from each LRF partner organisation. During 2023/24, these themes have included:

- Winter preparedness
- Summer risks
- Terrorism
- Resilience collaboration opportunities

NATIONAL RESILIENCE STANDARDS: We continue to assess our LRF's performance against the [National Resilience Standards](#), and in the last year we took part in a Peer Review on the standards with regional LRFs and our Lead Government Department.

DEBRIEFING: It is important that we capture good practice and any learning from local incidents and exercises, and so we undertake debriefing activity. We maintain a Debrief Tracker to ensure that all the learning from exercises is logged and monitored.

JOINT ORGANISATIONAL LEARNING: In January 2024 we recruited to a brand new post in the LRF structure – an LRF Joint Organisational Learning Officer. The overall purpose of the role is to promote a culture of joint organisational learning across all the partner agencies that comprise our LRF.

The postholder will follow up on actions emerging from multiagency exercises and incident debriefs, and assesses public inquiries (such as the recent Manchester Arena Inquiry and the current UK Covid-19 Inquiry) for relevant learning to embed within our joint operational working practices.

The post gives us space to seek good practice and learning from across the UK to share within our county, and also capture our own to share with other resilience forums nationally.

Finally, the postholder will facilitate debrief, deliver training, and develop multiagency exercises and workshops to meet the training and exercising programme as directed by the LRF Training and Exercise Group.

TERRORISM: We are working in partnership with the National Counter Terrorism Security Office (NaCTSO) and other LRFs to develop a new online exercise resource to help local businesses and community groups plan for terrorism on or near their buildings and events. This will launch in 2024/25.

Planning for emergencies



One of the main roles of our LRF is to plan and prepare for emergencies that could take place in South Yorkshire. To do this, we need to understand what risks we face.

We use two documents to support us in our local assessment of risk – the National Risk Register and the National Security Risk Assessment (NSRA). The National Risk Register is available on a [national digital platform](#) and also as a document [GOV.UK](#)

Risks may be non-malicious (such as accidents like a rail crash or natural hazards like flooding or a heatwave), or they may be malicious threats from those who seek to do harm (such as terrorism or cyber threats).

Our LRF Risk Management and Planning Group uses these documents as a basis to prepare a local South Yorkshire Community Risk Register which describes the highest risks in South Yorkshire, and also provides advice on preparing yourself and your home for local emergencies.

Just because a risk is listed in the South Yorkshire Community Risk Register, this does not mean that we think it will happen, or that it may occur on any given scale. It simply means that there is the potential for that risk to occur.

Producing the Community Risk Register is the first step in the emergency planning process to help us to gain a better understanding of the risks we face in South Yorkshire and is used as the basis for all our work within the Local Resilience Forum, making risk the foundation of resilience efforts in the county.

Over the last year we have refreshed some of our existing LRF plans, and also developed new ones to reflect the risks that we face.



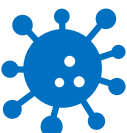
We have updated both our strategic and tactical multiagency major incident frameworks to reflect emerging good practice and learning from incident responses.



We have refreshed our Severe Weather Plan with learning from Storm Babet, from the 2023 heatwave, and from the 2024 snow event.



We have updated our LRF Constitution which describes our partnership governance arrangements.



We have developed a new Infectious Disease and Pandemic Framework which captures our learning from the multiagency response to the Covid-19 pandemic and emerging learning from the ongoing public inquiry.

Industrial Action and Protests

INDUSTRIAL ACTION: Across the country, 2023/24 has seen an increase in industrial action. This has affected all sectors including:



Rail



NHS



Schools



**Environment
Agency**



**Civil
Service**

Throughout the year, an LRF Industrial Action Tracker has kept track of all industrial action and its potential impact on public and essential services. Each Sector has led its own emergency planning to ensure the continuation of critical services during the period of industrial action, and multiagency briefings have been scheduled where required.

PROTESTS: Protests have been a feature of the last year, with activity from animal and environmental activists, and from those protesting the situation overseas in Gaza.

On 06 May 2023 at Doncaster Racecourse a group ran onto the racetrack to try to stop the final race with a sit-down protest – their first flat race protest. The protesters were removed by the Racecourse security team and were later charged by Police.

In early October 2023 in response to the situation in Gaza, South Yorkshire experienced the first of a series of protests by pro-Palestinian protesters. Following some flag-related protests, we have seen regular pro-Palestinian / peace protests which have mainly taken place in Sheffield, and have attracted high numbers of peaceful protesters. A

multiagency meeting was convened to develop shared situational awareness regarding planned protest activity and understand the potential for any resulting hate crime or racially aggravated attacks, and all subsequent activity has been managed as “business as usual”.

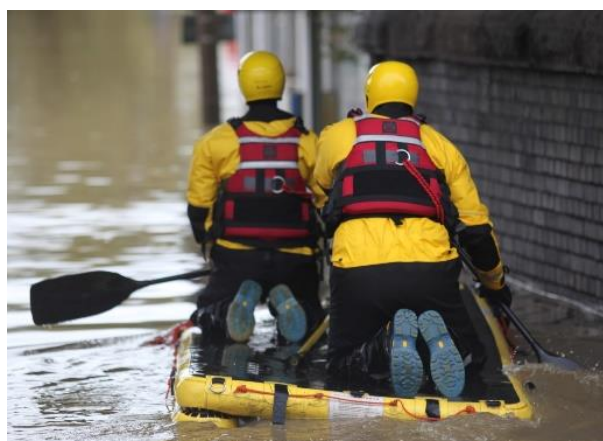


Storm Babet

Flooding from Storm Babet hit South Yorkshire on 20 October 2023, which was the wettest October day on record for Sheffield and across South Yorkshire we saw a month's worth of rain fall in 18-36 hours – up to 84mm.

Several river levels exceeded the previous records set during the 2007 and 2019 floods – including the Sheaf, Porter Brook, the Rother, and the Ea Beck.

This resulted in flooding of properties across South Yorkshire, with nearly 200 impacted. The most extensive and rapid property flooding was in Catcliffe in Rotherham, where emergency responders had to ask the residents of up to 250 properties to evacuate at short notice.



A multiagency major incident was declared on Friday 20 October 2023 and stood down again on Tuesday 24 October 2023.

Storm Babet brought widespread flooding throughout South Yorkshire – to homes, businesses, schools, roads, rail lines, and parks. South Yorkshire Fire and Rescue attended 47 storm-related incidents. Water rescues of persons from homes and vehicles were undertaken by both South Yorkshire Fire and Rescue and Yorkshire Lowland Rescue.

Humanitarian Assistance was provided by local authorities. This included alternative accommodation, hot meals, clothing, emergency funds, and Rest Centres, with the longest-running Rest Centre at Catcliffe Memorial Hall in Rotherham. South Yorkshire Community Foundation launched a Flood Disaster Appeal, which raised over £20,000.

No local authority area escaped the storm. In Barnsley, properties on Lang Avenue and Ings Lane Caravan site were flooded. Doncaster saw impacts in Sprotbrough, Conisbrough, and Old Denaby. Sheffield saw flooding on Totley Brook Road and several businesses near local water courses.

From an infrastructure perspective, flood gates were closed, and roads and rail were badly affected with roads closed across the County, buses disrupted, Rotherham Station flooded, and most rail lines impassable. A planned Rotherham United football match was called off due to safety concerns. Local Authorities worked hard to clean and reopen flooded roads.

To check if you are at risk of flooding, you can visit the GOV.UK [Check for flooding page](#), and you can also sign up for Flood Alerts from this page.

Storm season 2023/24

Whilst it was the worst storm of the season for South Yorkshire, Storm Babet was far from the only storm we faced. Between November 2023 and January 2024 we also experienced the effects of Storm Ciaran, Storm Debi, Storm Elin, Storm Fergus, Storm Gerrit, Storm Henk, Storm Isha, and Storm Jocelyn, and Storm Pia.

Storm Elin closed roads due to fallen trees, and caused train cancellations along the East Coast Mainline following damage to all four lines. The storm affected power lines, and saw the cancellation of Sheffield's Percy Pud 10k race which had already been postponed from the previous weekend due to snow. It also brought down an iconic and much-loved and photographed tree in Graves Park in Sheffield.

Storm Pia (as named by the Danish weather service) hit South Yorkshire on 21-22 December 2023, causing trees to fall blocking roads and footpaths, and leading to travel disruption following closure of the Tinsley Viaduct and Woodhead Pass to high-sided vehicles, and speed restrictions on the railway. The storm also affected our electricity infrastructure, bringing down power cables and affecting substations. The storm also blew the roof off a block of flats in Lowedges in Sheffield, and led to Sheffield Christmas Market having to close on 21 December, and the Frost Festival Finale in Doncaster having to be cancelled.



Storm Henk hit South Yorkshire only 2 days into New Year 2024. Significant rainfall on already wet catchments led to surface water flooding and river impacts. We reached 10 Flood Alerts and 8 Flood Warnings overnight. In Barnsley there were alerts for the rivers Don and Dearne, flood boards were deployed, and there was surface water flooding in Grimethorpe. In Sheffield buses were diverted around flooded roads in Totley, Worrall, and Loxley, the Sheffield to Lincoln rail line was blocked by flooding, and the M1 Junction 34 slip road was closed due to lane flooding. Five flooded roads closed in Rotherham in Dinnington, Stone, Wath, Greasbrough, and Kilnhurst. The Tram-Train route was flooded between Tinsley and Parkgate. Doncaster saw road closures in Barnby Dun, Ferry Road in Thorne, Grey's Bridge, Kirk Bramwith Bridge, Tickhill, Brodsworth, and Pastures in Denaby. Thankfully, the river levels did not lead to significant property impacts.

January 2024 was a very windy month, with **Storm Isha** and **Storm Jocelyn** bringing strong winds to South Yorkshire and across the country. This wind strength impacted the electricity system, but all those off power were restored within 24 hours. The Woodhead Pass and the Tinsley Viaduct were again closed to high-sided vehicles. Local Authorities responded to a number of trees which came down in the strong winds, and to localised property damage.

You can check the Met Office website for [weather warnings](#) and the [weather forecast](#) and [seasonal weather advice](#), and access NHS advice on [seasonal health](#).

Major fires

INDUSTRIAL FIRE: On 28 September an industrial site in Sheffield caught fire, and a multiagency response was required. The fire involved 60-100 tonnes of titanium turnings which created a large plume of black smoke right next to the A61 Penistone Road, and the plume could be seen from several miles away. A multiagency Tactical Coordinating Group (TCG) was called due to the potential for a wider impact on local residents and businesses, as the fire was right next to Sheffield Wednesday's stadium, Owlerton Stadium Dog Track, and Hillsborough College. The college had to be rapidly evacuated early on in the incident due to its proximity to the fire, and students moved to online learning. Multiagency work on the ground between Fire and Rescue, Environment Agency, Police, Ambulance, and site managers allowed the deployment of firefighting tactics which successfully reduced the size of the blaze during the course of the day. Continued firefighting overnight meant that the incident could be stood down by lunchtime the following day, and the Sheffield Wednesday Vs Sunderland Home Match was able to go ahead – which was a great relief to all fans!



WASTE FIRE: After the hard work of a range of multiagency partners from September 2022 through to January 2023 to extinguish a deep-seated waste fire on Kiveton Park Industrial Estate, it was difficult to hear that the was on fire again in January 2024. The waste fire was tackled by South Yorkshire Fire and Rescue, with the support of agencies such as the Environment Agency (EA) and Rotherham Metropolitan

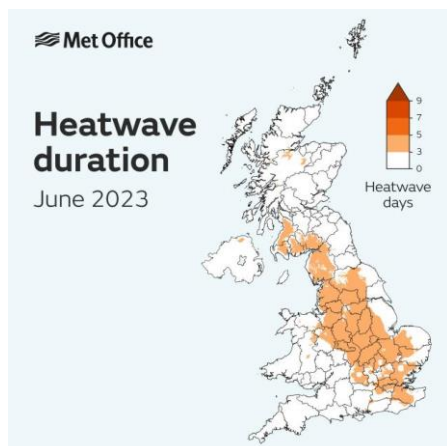
Borough Council (RMBC). Thanks to all the hard work of agencies during the last incident, the fire was quickly contained and community impacts were much lower than in the previous incident.

WILDFIRE: As temperatures increase, so does the risk of wildfires. Many will recall the devastating heatwave fires in South Yorkshire back in July 2022. Even in lower temperatures, wildfires can still occur. Overnight on 30-31 May 2023, South Yorkshire Fire and Rescue (SYFR) were called out to Lady Canning Plantation in Sheffield where a large wildfire was burning; it could be seen from miles away. SYFR deployed a number of fire crews and two Polaris all-terrain vehicles. There was another wildfire in a field at Sunnyside in Rotherham in July 2023.



For advice on fire safety in the home, please access [GOV.UK](https://www.gov.uk). [South Yorkshire Fire and Rescue](#) have a range of fire safety information and British Red Cross publish useful [public wildfire advice](#).

Extremes of temperature



HEATWAVE: South Yorkshire hit [heatwave conditions](#) with [Heat Health alerts](#) in early June 2023 during a period of hot days and warm nights. In fact, June 2023 the [hottest on record!](#)

The heatwave was broken on the weekend of 17/18 June by thunderstorms, lightning, and torrential rain, leading to a couple of local flood warnings. Woodhouse Mill near Sheffield saw 35.6mm of rain fall between 1800hrs and 1900hrs on Sunday 18 June, which is a very high amount in just an hour!

Both the [NHS](#) and the [UK Health Security Agency](#) have useful advice on heatwaves, plus additional guidance on the public health impact of [droughts](#).

SNOW AND ICE: On 08 February 2024 we saw some heavy snow in South Yorkshire, with the southern part of South Yorkshire, Rotherham and Sheffield being particularly affected.

Despite the very hard work of Local Authority gritting teams, rain and sleet washed away much of the salt which had already been spread on the roads in preparation for the snow. This led to some slippery surfaces across our county – especially later in the day as the snowfall became heavier.



The Parkway leading out of Sheffield became especially congested as a result of a combination of the snow building up on surfaces, schools closing meaning parents had to collect children, people leaving work early, and public transport being impacted by the conditions.

The A635 Woodhead Pass was closed, stranded vehicles blocked the Blue Supertram route, and a high number of bus services were cancelled across Stagecoach, First South Yorkshire, TM Travel, and Hulleys.

All of Rotherham's waste recycling centres had to close due to the conditions.

All impacts were managed through "business as usual" multiagency response arrangements, with no requirement to activate the LRF response structures. Thankfully, the snow was short-lived, turning to rain overnight and roads quickly getting back to normal. Thank you to all LRF partners for your response to our latest Snow Day.

Our more “unusual” incidents

CRANE INCIDENT: One of the more unusual incidents in South Yorkshire took place on 03 July 2023 when South Yorkshire Police responded to an individual climbing up a crane. The crane was on the top of a 15 storey building which was under construction.

The individual proceeded to throw items down from the crane onto those below, and so a cordon was put into place near Sheffield Bus Station to protect the public and emergency responders. There were a number of bus diversions in place as a result.



Responders to the incident included Police, Fire and Rescue, Ambulance, and Sheffield City Council.

The individual remained up the crane for 27 hours before being brought to safety by Police.

After such incidents we work together to capture insights to help us to plan for any similar incidents in the future.

Our review of this incident concluded that despite the obvious dangers and complexities of the incident, it was resolved without injury to the offender or any responding staff, and that credit should be given to all responders involved.

MAGNET FISHING: In February 2024 local magnet fishers pulled a suspected bomb out of the River Don in Sheffield near Meadowhall. Police attended, and the military Explosive Ordnance Disposal (EOD) team were called. Meadowhall Way had to be closed, causing traffic congestion.

Thankfully it turned out to just be a shell.

It is not illegal to go magnet fishing in England where permission has been sought. The Canal and Rivers Trust have [advice on magnet fishing safety](#).



Preparing for emergencies

Thankfully, emergencies do not happen very often.

But it can be useful to have an understanding of the types of risk that we may face in South Yorkshire. The very severe floods that struck South Yorkshire in 2007 and 2019 are good examples, as are the incidents we have detailed in this report and the main risks to South Yorkshire which we capture in our Community Risk Register on our [South Yorkshire LRF webpage](#).

There are things that everyone can do to make ourselves, our families, and our businesses more informed and better prepared.

- For general advice on preparing for emergencies, the GOV.UK [preparing for emergencies page](#) has a range of useful information for individuals, homes, businesses, and communities.
- To check if you are at risk of flooding, you can visit the GOV.UK [Check for flooding page](#), and you can also sign up for Flood Alerts from this page.
- To access weather warnings, follow this link to the [Met Office website](#), which also has useful [seasonal weather advice](#).
- For heatwaves, both the [NHS](#) and the [UK Health Security Agency](#) have useful advice, plus additional guidance on the public health impact of [droughts](#).
- There is further NHS advice available on [seasonal health](#), and UK Health Security Agency have advice in their [Adverse Weather and Health Plan](#) and on [cold weather](#).

For more information on local risks and how you can prepare, you can read our Community Risk Register on our [South Yorkshire LRF webpage](#).

If you are able, you may wish to consider gathering a few items together into a home kit in case there is an emergency – either in a small, easy-to-carry bag, or in a checklist of the things you will grab in a hurry. Once prepared, keep this kit or list at home, and ensure everyone in the family knows where it is stored.

- ✓ A list of emergency contact numbers
- ✓ A battery operated torch and spare batteries (or a wind-up torch)
- ✓ A battery operated radio and spare batteries (or a wind-up radio)
- ✓ Any essential medication, some toiletries and a first aid kit
- ✓ Three days' supply of bottled water and ready-to-eat food that won't spoil (remember a tin opener if your kit contains tins of food)
- ✓ Copies of important documents, such as insurance policies, birth certificates, passports, bank account details
- ✓ Spare keys to your home and car
- ✓ Spare glasses or contact lenses
- ✓ If needed, baby and pet supplies



Our team

South Yorkshire LRF has 3 Co-Chairs. The Co-Chairs are drawn from the membership of the LRF Strategic Meeting and are appointed for a period of 3 years.

Our Co-Chairs are:



Damian Allen, Chief Executive, City of Doncaster Council



Chris Kirby, Chief Fire Officer, South Yorkshire Fire and Rescue



David Hartley, Assistant Chief Constable, South Yorkshire Police

The South Yorkshire LRF Secretariat is hosted by South Yorkshire Police on behalf of the LRF partnership, and the Secretariat comprises:

- An LRF Coordinator
- An LRF Joint Organisational Learning Officer
- An LRF Support Officer

If you wish to contact South Yorkshire LRF, you can do so through the South Yorkshire LRF Secretariat team. Please [email us](#) here or check out our [South Yorkshire LRF webpage](#).

For any media enquiries regarding South Yorkshire LRF, please [email the media team at South Yorkshire Police](#).